

NeuraScanner



Installation and Operation Guide

NeuraScanner

**Installation and
Operation Guide**

Neuralog, Inc.

Neuralog, Inc., Stafford, Texas
© 2002 *Neuralog, Inc.* - All Rights Reserved
Printed in the U.S.A.

Neuralog Inc. makes no representations or warranties, either expressed or implied, by or with respect to anything in this manual, and shall not be liable for any implied warranties of merchantability or fitness for a particular purpose or for any indirect, special or consequential damages. While every precaution has been taken in the preparation of this book, Neuralog, Inc. assumes no responsibility for errors or omissions. This publication and features described herein are subject to change without notice.

This edition documents *NeuraScanner v 2.0*

Part number: HW-NSCAN

Released: August 2000

Copy Protection

NeuraScanner software is available only from Neuralog, Inc. It is protected by the copyright laws that pertain to computer software. No part of this publication may be reproduced, stored in a retrieval system or transmitted, in any form or by any means, photocopying, recording or otherwise without prior written consent of Neuralog, Inc. No patent liability is assumed with respect to the use of the information contained herein.

Trademarks

Sun, SPARC and Open Windows are trademarks of Sun Microsystems, Inc., Silicon Graphics and SGI are trademarks of Silicon Graphics, Inc. UNIX is a registered trademark of AT&T. Motif is a registered trademark of the Open Software Foundation. Windows and Windows NT are trademarks of Microsoft Corporation. All other product names are trademarks of their respective manufacturers.

Neuralog, NeuraLog, NeuraMap, NeuraView, NeuraSection, and NeuraScanner are trademarks of Neuralog, Inc.

Neuralog, Inc. Software License Agreement

This is a legal agreement between you (either an individual or entity), the end user licensee ("Licensee") and Neuralog, Inc. ("Neuralog"). If you do not agree to the terms of this agreement, promptly return the disk package and other items that are part of this product in their original package.

Grant Of License. You are permitted to use the Program on one computer at a time. You may also: (a) copy the Program into any machine readable or printed form for backup purposes; (b) modify the Program and/or merge it into another program; and (c) transfer the Program and license to another party if the other party agrees to accept the terms and conditions of the Agreement. If you transfer the Program, you must at the same time notify Neuralog in writing of the transfer and either transfer all copies whether in printed or machine-readable form to the same party or destroy any copies not transferred; this includes all modifications and portions of the program contained or merged into other programs. The program is the property of Neuralog, is proprietary and confidential to Neuralog, and shall not be used by any third party (with or without compensation) without the prior written consent of Neuralog. You agree not to disassemble or reverse engineer the program and not to market it or divulge its contents to any third party, other than your subsidiaries or affiliates.

Term. This license is effective until terminated. You may terminate it at any other time by destroying the program together with all copies, modifications and merged portions in any form. It will also terminate upon conditions set forth elsewhere in the Agreement or if you fail to comply with any term or condition of this Agreement. You agree upon such termination to destroy the program together with all copies, modifications and merged portions in any form.

Indemnification. Neuralog agrees to defend Licensee, at Neuralog's expense, against any claim, suit of action, regardless of its merit alleging that Licensee's use of the Program in and of itself constitutes an infringement of the patent, copyright, trade secret or other intellectual property right of the party instigating the claim, suit or action. Neuralog also agrees to indemnify and hold harmless Licensee from and against any judgment or settlement (if entered into with Neuralog's consent) resulting from any such claim, suit or action. Licensee shall promptly inform Neuralog of any claim, suit or action to which the foregoing may apply and shall cooperate fully with Neuralog in the defense of such claim, suit or action.

Limited Warranty. For a period of 30 days after you receive the Program, if the Program fails to perform substantially as stated in Neuralog's user documentation, you may return the Program and documentation for a full refund. If, for a period of 30 days after you receive the Program, any media (CD ROM, diskettes, or tape) on which the Program is furnished (as distinguished from the program itself) proves to be defective in its materials or workmanship under normal use, Neuralog will provide a replacement. After 30 days, Neuralog will replace the defective media for a reasonable fee, upon return of the defective media.

This limited warranty gives you specific legal rights. You may have others, which vary from state to state.

Disclaimer Of Other Warranties. THE ABOVE LIMITED WARRANTY IS THE ONLY WARRANTY OF ANY KIND, EXPRESS OR IMPLIED, INCLUDING BUT NOT LIMITED TO THE IMPLIED WARRANTIES OF MERCHANTABILITY AND FITNESS FOR A PARTICULAR PURPOSE, THAT IS MADE BY NEURALOG FOR THE PROGRAM OR FOR ITS ACCOMPANYING DOCUMENTATION AND OTHER ITEMS. IF ANY STATEMENTS HAVE BEEN MADE OR ARE MADE IN THE FUTURE BY EMPLOYEES, DEALERS OR OTHER REPRESENTATIVES OF NEURALOG THAT ARE INCONSISTENT WITH THIS AGREEMENT, SUCH STATEMENTS WILL NOT MODIFY OR ENLARGE UPON THE ABOVE LIMITED WARRANTY AND ARE NOT BINDING ON NEURALOG. NO WARRANTY OF ANY KIND, EXPRESS OR IMPLIED, SHALL EXTEND BEYOND 90 DAYS FROM THE DATE YOU RECEIVED THE PROGRAM. SOME STATES DO NOT ALLOW LIMITATIONS ON DURATION OF AN IMPLIED WARRANTY, SO THE ABOVE LIMITATION MAY NOT APPLY TO YOU.

Limitations On Remedies, No Liabilities For Consequential Damages. IN THE EVENT OF A DEFECT IN ANY PORTION OF THE PROGRAM, ITS DOCUMENTATION OR MEDIA, OR ANYTHING ELSE FURNISHED WITH THE PROGRAM, YOUR SOLE REMEDY SHALL BE TO OBTAIN A REFUND OR REPLACEMENT UNDER THE TERMS STATED ABOVE. IN NO EVENT WILL NEURALOG OR ANY OTHER PERSON INVOLVED IN THE CREATION, PRODUCTION, SALE OR DELIVERY OF THE PROGRAM BE LIABLE TO YOU OR ANY OTHER PERSON FOR ANY DIRECT, INDIRECT, SPECIAL, INCIDENTAL OR CONSEQUENTIAL DAMAGES (INCLUDING, WITHOUT LIMITATION, LOST PROFITS, LOST OPPORTUNITY OR LOST SAVINGS) ARISING IN CONNECTION WITH THE USE OR ATTEMPTED USE OF THE PROGRAM, EVEN IF NEURALOG HAS BEEN ADVISED OF THE POSSIBILITY OF SUCH DAMAGES. BECAUSE SOME STATES DO NOT ALLOW THE EXCLUSION OR LIMITATION OF LIABILITY FOR CONSEQUENTIAL OR INCIDENTAL DAMAGES, THE ABOVE LIMITATIONS MAY NOT APPLY TO YOU.

General. Except as specifically licensed above, you may not use, copy, modify or transfer the Program, in whole or in part. This Agreement will be governed and interpreted by the laws of the State of Texas of the United States, without regard to the conflicts of law provisions thereof. The venue of any legal action arising under or in connection with this Agreement will be the State of Texas. This Agreement is the complete and exclusive statement of the agreement between Neuralog and you. The agreement supersedes any prior proposal, statement or Agreement, oral or written. This Agreement may only be amended in a writing signed by both parties. This License Agreement and the right granted hereunder may only be assigned or transferred in accordance with Neuralog's then-current policies, which may include the payment of a substantial transfer fee. Any other attempted assignment or transfer shall be void.

Neuralog Hardware Warranty

The NeuroScanner from Neuralog is warranted to be free from failures due to defects in material and workmanship for one (1) year from the date of purchase. During this 1 year period Neuralog will, at its sole option, replace or repair at no charge the product which, in its opinion, is defective.

Following the warranty period, Neuralog will, at its sole option, replace or repair the defective product; Neuralog will charge you a fixed fee to cover handling and service costs based on Neuralog's then-current price schedules. Neuralog, at its sole option, may replace or repair the defective product with a then-current product having similar features and functionality as determined by Neuralog.

You are responsible for packing the failed product in original or equivalent packaging for shipment, and for the charges to ship the failed product to Neuralog. Neuralog is responsible for charges to ship the repaired or replacement product. If any charge to you is involved, the replacement product will be sent C.O.D.

If the failed product has been modified without Neuralog's consent or if the failure is the result of misuse, abuse or misapplication, Neuralog has no obligation to repair or replace the failed product.

Before returning a failed unit, the buyer must obtain a Return Merchandise Authorization (RMA) number by calling Neuralog's Customer Service @ 1-281-240-2525. The RMA number should be prominently displayed on the outside of the returned package and on the accompanying packing list. Neuralog cannot be held responsible for any package returned without an RMA number.

Except as expressly provided above, the hardware and accompanying written materials (including the user's manual) are provided 'as is' without warranty of any kind, including the implied warranties of merchantability and fitness for a particular purpose, even if Neuralog has been advised of that purpose. In no event will Neuralog be liable for any direct, indirect, consequential, or incidental damages arising out of the use of or inability to use such product even if Neuralog has been advised of the possibility of such damages. Some states do not allow the exclusion or limitation of liability for consequential or incidental damages, so the above limitation may not apply.

NTSTest Report No. A 0522-CE

Test Summary

This test record demonstrates “CE” Mark compliance with the following EMC requirements for the **NeuraScanner**.

• **Emissions**

European Regions:

- EN55022 Class B Emissions (Radiated & Conducted)

North America Regions:

- CFR 47, Part 15, Subpart B, Class B, FCC Emissions
- ICES-003 Issue 2, Rev. 1, Class B ITE Emissions

• **Immunity**

European Regions:

FCC Rules

- EN 50082-1,98 Immunity:

- EN61000-4-2:95, ESD, ± 8 kV Air, ± 4 kV Contact
- EN61000-4-3:95, RF Immunity, 3V/m
- EN61000-4-4:95, EFT, 1kV
- EN61000-4-6:95, Conducted Susceptibility, 3 Vrms

This device complies with applicable FCC Rules.



Table of Contents

| | | |
|----------|--|-----------|
| 1 | Introduction | 11 |
| 2 | Important Safety Information | 13 |
| 3 | Before Using | 15 |
| 4 | Setup and Software Installation | 21 |
| 5 | Basic Scanning | 23 |
| 6 | Additional Features | 25 |
| 7 | Software Reference | 29 |
| A | System Requirements | 33 |
| B | Troubleshooting | 35 |
| | Index | 39 |

1 Introduction

CONGRATULATIONS! You have just purchased the world's first and only scanner designed specifically to accommodate well logs. Portable, robust and fast, the NeuraScanner has been built to meet the specific demands of scanning logs. NeuraScanner is so compact it fits in a standard briefcase to be carried anywhere - office, customer site, rig, home. Designed with dual built in processors and on-board image processing, NeuraScanner is 20 times faster than its FaxScan predecessor and produces smaller, cleaner images than other larger and more expensive scanners. For well log scanning, NeuraScanner is a must.

NeuraScanner offers the following features:

- **Compact and Light Design**
 - 15" W x 9" D x 2.5" H
 - Weighs only 10 lbs.
- **Fast, Flexible and Clean Scanning**
 - Scan rate of 1"-4" per second.
 - 1" - 12.1" width x unlimited length.
 - Start/stop scan anywhere on well log or document.
 - Customizable batch scanning.
- **Black/White, Color, and Grayscale Imaging**
- **Multiple Interface Compatibility**
 - USB and Serial ports provide flexible output to your PC.
- **Universal Power Supply**
 - 110-220V/50-60 Hz allows for plug in anywhere around the world.
- **Film Scanning Kit (*Optional*)**
 - Any NeuraScanner can be modified to scan full or reduced scale film. *This includes both positive and negative film.*



2 Important Safety Information

When using electrical appliances or equipment, basic safety precautions should be followed, including the following:

Restriction on Use

Use this equipment only for its intended use as described in this guide. Do not use power supplied outside the specified voltage/hertz range. Do not block any openings on the equipment. Do not use corrosive chemicals or vapors on the equipment. Do not expose equipment to rain or moisture.

Grounding

This equipment must be grounded. Connect only to properly grounded outlet.

Power Supply Cord

Do not operate the equipment if it has a damaged power cord or plug. Do not immerse power cord or plug in water. NeuraScanner uses a detachable power supply cord. **The power supply cord may be used as a disconnect to turn the scanner off.**

Fuse

Only replace the fuse with the same type and rating.

Servicing

This equipment should be serviced only by qualified service personnel. Contact Neuralog, Inc. for examination, repair or adjustment at 1-281-240-2525.

3 Before Using




This section will familiarize you with your new NeuraScanner.

In The Box

- NeuraScanner Scanner
- Power Supply Cord
- USB **and** Serial Cables
- Product Release CD with **10-digit License Key #** Label.
- This User Guide



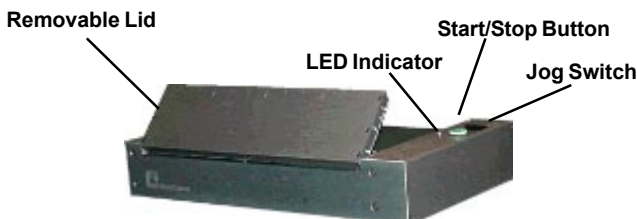
NeuraScanner

| | | |
|---|---|---|
|  |  |  |
| Power Supply Cable | USB Cable (Win98/Win2K/XP) | Serial Cable (9F-25M) (WinNT/Win95) |

NeuraScanner is shipped with a Power Supply Cable, a USB Cable and Serial Cable. USB is recommended for PC computers (Win2000/XP/98), although a Serial connection to your PC is possible. (USB is faster). *Cables may differ slightly from those shown.*

NeuraScanner software and drivers are found on the included CD. Check for updates on Neuralog's web site, www.neuralog.com.

The Scanner



Removable Lid

The Removable Lid is opened by lifting up on the numbered edge. It will pivot and lift slightly. Remove by lifting one end and tilting slightly. Replace by aligning it in the lid grooves and gently lowering into place. You will hear the lid “snap on” when it is securely back in place.

NOTE: Lid does not have to be removed to place document in scanner.

Start/Stop Button

The Green Button on the scanner top is used to Start, Pause or Stop a Scan. **NOTE:** This may also be controlled in NeuraScanner’s software.

Jog Switch

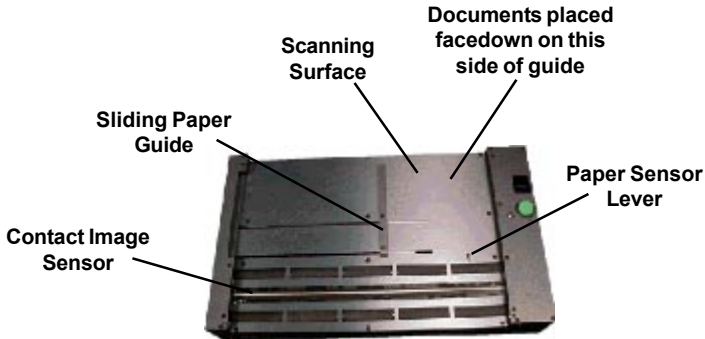
The Black Jog Switch is used to advance a document when the scan has been paused or stopped. **NOTE:** Jog Switch is ignored if pressed while scanning.

LED Power/Activity Indicator

The LED Power/Activity Indicator is a green light that is active when the scanner power is on. The LED will blink while data is being transferred from the scanner to any of the ports.

NOTE: After scan has ended or paused, data transfer may continue for a short time.

Top Panel



Scanning Surface

The Scanning Surface is made of smoothly grained aluminum for optimal paper flow. Documents are placed face down between paper guide and right scanner edge next to green start/stop button.

Sliding Paper Guide

The Sliding Paper Guide defines document scan width to control paper flow. To adjust the paper guide, pull up on the guide bar, slide to desired location and release. Documents should slide freely, but snugly between paper guide and right scanner edge.

Paper Sensor Lever

The Paper Sensor Lever indicates to the software that a document is present for scanning. Make sure the lever is down when a document is placed in position.

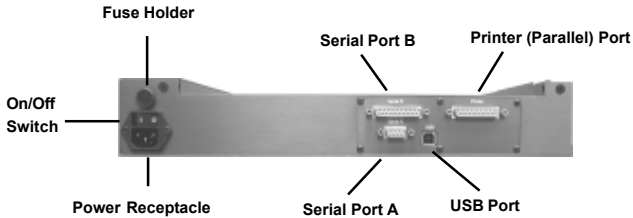
NOTE: NeuraScanner will not scan if lever is not depressed.

Contact Image Sensor

The Contact Image Sensor “sees” the document. It is covered by a glass strip.

NOTE: The glass should be kept clean for optimal scanning.

Rear Panel



Power Receptacle

The AC Input Power Receptacle uses a standard power supply cable.

On/Off Switch

The On/Off Switch controls power to your scanner. The **I** position indicates *Power On*, while the **O** position indicates *Power Off*. **NOTE:** Power supply cord may also be used as a disconnect to turn the scanner off.

Fuse

The correct fuse type and rating is indicated on the scanner panel. To replace, use a standard flathead screwdriver. **NOTE: Only replace with fuse of same type and rating.**

Serial Port – A

The 9 Pin Serial Port A is used to connect NeuraScanner to your PC or UNIX workstation with a standard serial cable. Check the serial port on your computer to ensure you have the proper cable.

Serial Port – B

The 25 Pin Serial Port B is used to connect NeuraScanner to your PC or UNIX workstation with a standard serial cable. Check the serial port on your computer to ensure you have the proper cable.

Printer (Parallel) Port

The Printer Port may be activated in a future firmware update to connect NeuraScanner to your well log printer.

USB Port

The USB Port is used to connect NeuraScanner to your PC. USB connections are generally faster than Serial; therefore, it is the recommended connection type for PCs.

Side Panel



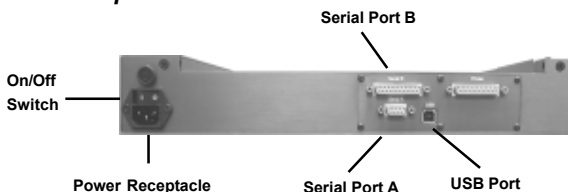
Fan

The NeuraScanner Fan circulates air through the motor. **NOTE:** In order to achieve proper air flow, the fan **must not be blocked**.

4 Setup and Software Installation

NeuraScanner is optimally configured for operation with USB. Consequently, Windows 98 or Windows 2000/XP is recommended. Serial port usage is also supported and may be used on any version of Windows 95 and above or on NT workstations. To install NeuraScanner, follow the steps below:

Hardware Setup



USB (Note: Win 2000/XP requires administrator privileges for driver installation.)

- Plug NeuraScanner into power source with supplied power cord.
- Connect NeuraScanner USB port to computer USB port with supplied USB cable.
- Turn scanner ON with power switch located on rear panel. *LED Power/Activity indicator will light up when scanner is fully booted.*
- Your computer will “detect new hardware”. When asked to install driver, choose the option to search CD. Required USB drivers are located in the **root directory** of the Neuralog Product Suite CD.*

Serial (WinNT/Win95)

- Plug NeuraScanner into power source with supplied power cord.
- Connect NeuraScanner serial port to computer serial port. Required cable will vary depending on your workstation. *Please read **Important Notes** on page 20 for additional serial port information.*
- Turn scanner ON with power switch located on rear panel. *LED Power/Activity indicator will light up when scanner is fully booted.*
- Turn on computer.

* Check www.neuralog.com for latest drivers.

Software Installation

- Insert **Neuralog's Product Suite CD**. (Software setup menu will automatically launch.)
- **Select the following products/components** from the Neuralog Product Launcher*:
 - **NeuraScanner** (Nscan)
 - **NeuraView SE** (Viewer licensed directly to the NeuraScanner)
 - **COM Reg** (Sets up communication between Nscan, NeuraView, & NeuraSection)
 - **Image Cacher** (For quicker image loading in all Neuralog products)
- Products/components chosen will run installations separately. Follow instructions for each. Special notes below:
 - ◆ **NeuraScanner**
 - **License Key # must be entered** in the **Help -> About Scanner...** panel when started the first time. (**Key# printed on CD sleeve**).
 - ◆ **NeuraView SE**
 - Requires installation of ODBC drivers (If not already installed by NeuraSection).
 - Licensed with key# entered in the NeuraScanner software (Nscan).
 - The NeuraScanner AND Nscan software must be running in order to use NeuraView SE. (*Upgradeable to a stand-alone or floating version*)
 - ◆ **COM Reg**
 - Registry entry enabling communication between Neuralog products.
 - ◆ **Image Cacher**
 - Sets size of disk space allocating for image caching.

NOTES:

- Computer Display Settings should be set to 16-Bit color/65536 colors or better. Scanning software will not function if set differently.
- Special installation instructions may have been included with your scanner shipment. If so, follow those instructions.

* Check www.neuralog.com for latest software update information and download.

** Portable Document Format. Download Adobe Acrobat Reader from <http://www.adobe.com>.

*** Check *Troubleshooting* section on pages 29-30 for more detailed information.

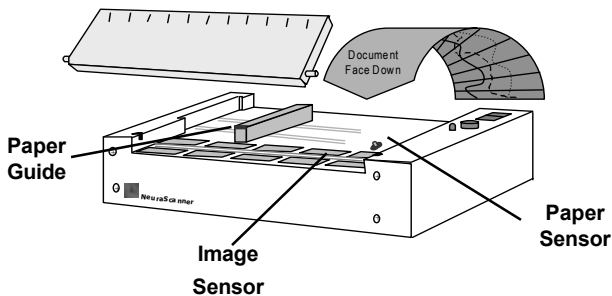
5 Basic Scanning

Start NeuraScanner Software

- Start -> Programs -> Neuralog -> NeuraScanner.

Place Paper In Scanner

- Open NeuraScanner lid. **NOTE:** Lid does not have to be removed.
- Place top edge of document **face down** on image sensor glass so that the document depresses paper sensor lever. **NOTE:** Document is fed from the rear of the scanner.
- Adjust sliding guide to be flush with edge of paper.
- Shut scanner lid.
- **Optional:** Scan may be started "mid document." Open and remove scanner lid, place document at the desired starting point and replace lid.



Set File/Scan Parameters

- Type or Browse for image directory path and name **before scanning**..
- Set image mode: **Color, black/white or gray**.
- Set image scan width.
- Set image scan length. **NOTE:** 'Unlimited' will scan until paper sensor lever "trips" (runs out of paper).
- For Black and White images, select thresholding Auto or Manual. **NOTE:** For Manual settings, 60 is a good starting point.
- For Color/Greyscale images, select Brightness.

Basic Scan Operations

BEGIN SCAN:



Click SCAN button in software **or** GREEN button on scanner. *Image will appear in window.* **NOTE:** Scanning may pause as image is processed

PAUSE SCAN:



Click PAUSE button in software **or** GREEN button on scanner. *This enables the user to skip past part of document /log before continuing scan.*

RESUME SCAN:



Click SCAN button in software. (**NOTE:** Do not press GREEN button when scan is in PAUSE mode. That action will STOP the scan at that point.)

STOP/CANCEL SCAN:

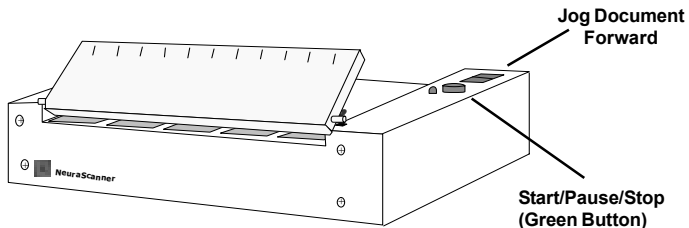


Click STOP button in software **or** GREEN button on the scanner. (**NOTE:** Pressing GREEN button on scanner **2 times after scan begins** will STOP scan at that point. Output file will contain image portion scanned before stopping.)

Software Scan Controls



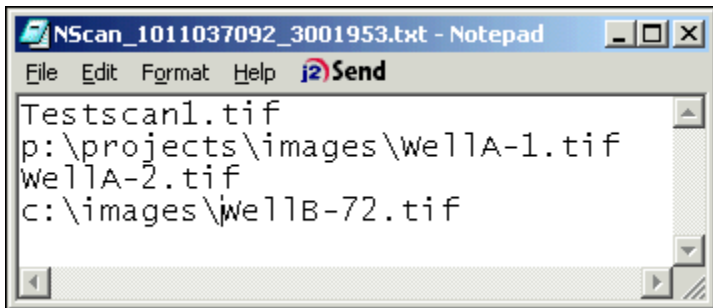
Hardware Scan Controls



6 Additional Features

Creating Custom Batch Files

- **File -> Create Batch File...**
(User's default text editor will launch (i.e. Notepad))
- **Type list of paths/filenames to be scanned** as shown in the example below:



- **Testscan1.tif**- Image will be placed in the current scan folder.
- **WellA1.tif**- Image will be placed in the p:\projects\images folder.
- **WellA2.tif**- Image will be placed in the p:\projects\images folder.
- **WellB-72.tif**- Image will be placed in the c:\images folder.
- **File -> Save** (Saves to c:\temp\Nscan for use)
- **File -> Close**



- **Yes** - 1st file name on the list will appear in the output file name keyin waiting for the document to be loaded and started. (The next file listed in the batch file will be displayed next to **Pending:**)
- **No** - File may be executed at a later time.
- **Creating a file outside of Nscan to use as a batch file**
 - Create text file as shown above and save with **.nsb** file extension. The file may then be opened and executed. **File -> Open Batch File...**

Starting a Scan from NeuraView

- **Start NeuraView (Start -> Programs -> Neuralog -> NeuraScanner)**
Note: *The NeuraScanner and Nscan must be running for licensing purposes.*
- **Click on the 'Launch Nscan icon'** as shown in the example below:



- **Nscan** will become the **active program** and a default name will be placed on the filename keyin. (**May be changed to new filename**).
- **Start Scan** as usual in Nscan.
- When scan is complete, it will open up in NeuraView for your review or editing.

Autoloading Scanned Images to NeuraView

- To view full image after scanning, select **File -> Send to NeuraView...**
- To have images automatically open in NeuraView after being scanned, check **Send to NeuraView** in the Preferences panel (**Edit -> Preferences...**

Options - Mode, DPI, Compression, & # of Colors

- **Mode:** Color, Grayscale, or Black & White
- **DPI:** 75, 100, 200, 300, 400
- **Compression:** Color/Grayscale - LZW or None
Black/White - Group 4 or None
- **# Colors:** Color - 2, 32, 256, 16-Bit, or 24-Bit
Grayscale - 32 or 256
Black & White - 2

Film Scanning Kit

Any NeuraScanner can be modified to scan full scale or reduced scale film. This includes both positive and negative film.

The Film Scanning Kit includes a backlit lid which allows transmitted light scanning, a lamp power supply, and a margin offset bar. The Film Scanning lid replaces the standard NeuraScanner lid. The margin offset bar attaches to the scanning surface and aligns the edge of the film with the lamp in the scanner lid.

Film Scanning

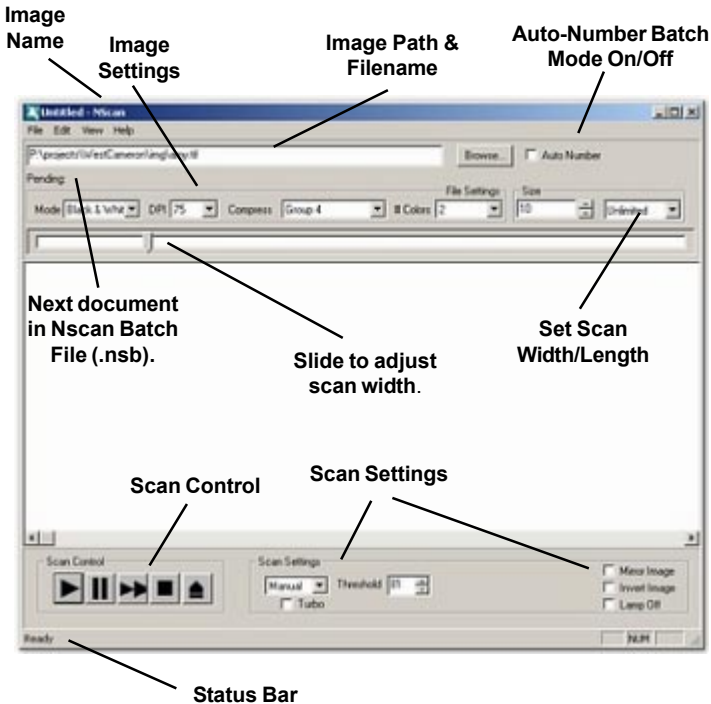
For best results the film should be placed face (emulsion side) down. The primary scanner lamp should be turned OFF, to use only the lamp in the lid. Other preferences should be set as follows.

- Edit->Preferences... Margin** set to **.6** to account for offset bar.
- Edit->Preferences... Activate Advanced Options** should be checked.
These options will appear in the lower right corner of the main display.
- Invert Image** if scanning Negative Films.
- Mirror Image** if you have chosen to scan face (emulsion side) up.
- Lamp Off** should be checked.
- Threshold** should be adjusted for B&W scanning. *Note: If the image is inverted, the threshold appears to have to opposite effect.*

IMPORTANT: There are many types of film. It is highly recommended that test scans be run to fine tune parameters.

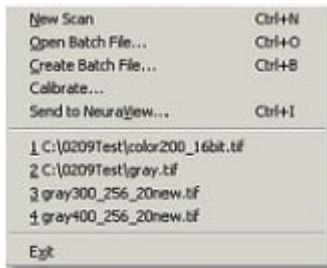
7 Software Reference

NeuraScanner's Interface Software



Main Menu Items

File -

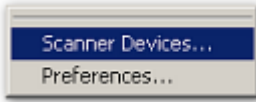


- Create New Scan Document
- Open Nscan Batch File (.nsb)
- Create Nscan Batch File (.nsb)
- Calibrate Scanner

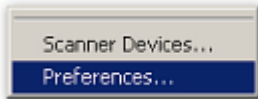
- Recent File List

- Exit

Edit -



Displays list of all detected USB/COM ports on your computer. If COM port is being used but scanner is not detected, select correct COM port and move to top of list. Close and re-open software to reset. (Default Serial is COM1).

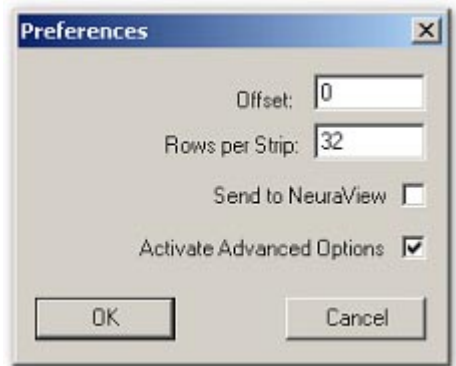


- Offset

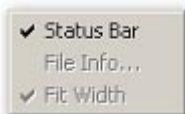
- * Default '0' for basic scanning
- * Set to '0.6' w/ Film Scanning Kit

- Rows per Strip

- * Default value is '32'
- AutoLoad Scanned Image to NeuroView
- Activate/Display Advanced Options (for film scanning)
 - * Mirror Image
 - * Inverse Image
 - * Lamp Off

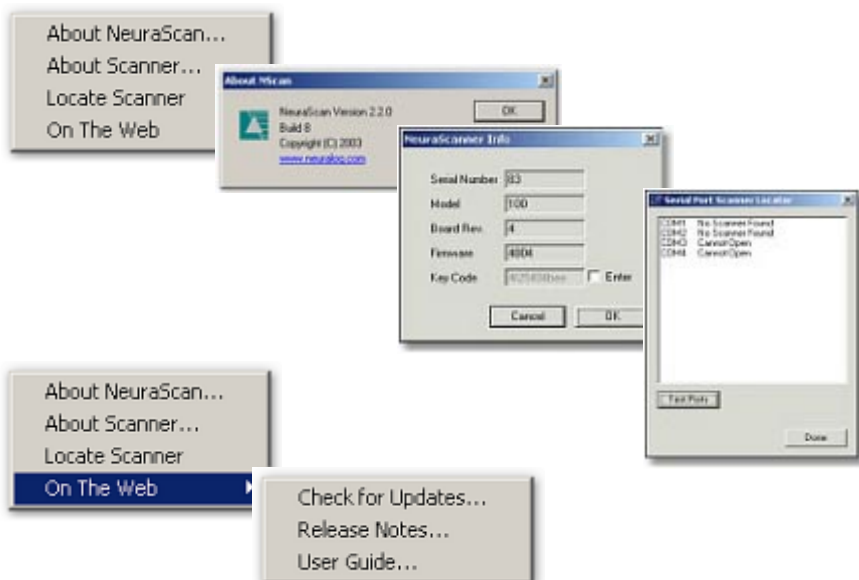


View -



Display/Hide Status Bar

Help -

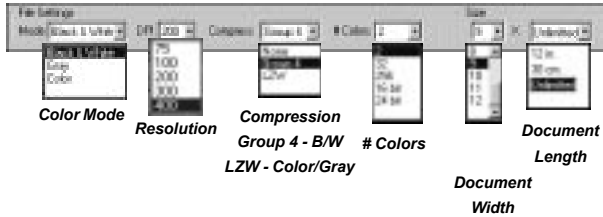


File Naming and Auto-Numbering Batch Scan Option -

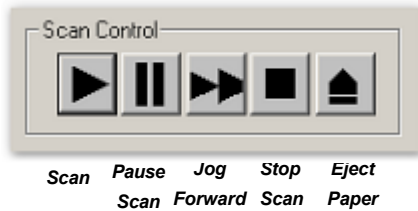


Enables user to browse to desired directory path for image file. In addition, Batch Scan option is available to auto-number files.

File Settings - User setable output file parameters.



Scan Control -



Software scan operation buttons.

Scan Settings - Enables user to set b/w scan thresholds and color/greyscale brightness.*



'Turbo' is a **licensed option** that may be purchased increasing b/w scanning to the speed of 4"/second.

* Auto-thresholding interactively adjusts scan darkness/lightness. If Manual is selected, the suggested starting threshold is 60.

A System Requirements

PROCESSOR: Pentium 2 or Better

MEDIA DRIVE: CDROM

OPERATING SYSTEM: Windows 2000/XP/98 with USB Support Recommended. *Windows NT and Windows 95 OSR2 Supported through Serial Port Only.*

GRAPHICS: 640X480 minimum, 800X600 (or higher) with 16 bit high color.

B Troubleshooting

| | |
|---|---|
| Scanner won't turn ON | <i>Verify by checking the green LED Power/Activity Indicator found on the scanner top.</i> |
| | Power Supply Cord may not be properly connected. Check connections. |
| | Power Cord may be bad. Try another Power Cord. |
| | Fuse may be blown. Check and Replace if necessary. Fuse holder is located in back of scanner near Power Receptacle. |
| Paper doesn't feed properly | Paper Guide may not be properly adjusted. Slide Paper Guide so that paper slides easily through scanner, but stays within track. |
| | Document may not be depressing Paper Lever. Make sure document is placed on scanner such that paper lever is depressed. The Paper Lever is located on the top side of the scanner under the Scanner Lid, about 1.5 inches from the right edge of the scanning |
| Scanner will not scan or scans erratically | Cable may be loose. Check cable connections. |
| | Scanner may be in undefined state. (Unlikely but possible.) Turn scanner power Off. Close Scanner Software. Turn scanner back On. Restart Scanner Software. |
| Image is bad or no image | <i>Document may not be placed in scanner properly.</i> |
| | Check to see that document is placed face down. |
| | Make sure document is placed on the Right-Hand side of the paper guide. |
| | Make sure the document is depressing the Paper Sensor Lever. |
| | <i>The scanner resolution may be set too low.</i> |
| | Check the resolution setting. 200 dpi is recommended for most well logs. If the well log original is poor, 300 dpi may be needed. |
| | <i>The scanner started in the incorrect mode.</i> |
| | Turn scanner off for about 60 seconds to reset internal mode settings. |

| | |
|---|---|
| Part of the log image is missing | The Scan Width Setting in the software may be incorrectly set. Check the setting and set it to the desired scan width. |
| Image is too light/too dark | The Thresholding may need to be adjusted. To lighten the image, decrease the thresholding. To darken the image, increase the thresholding. |
| Scan stops after only a few inches | It is possible the paper is not properly pressing down the paper sensor lever. Check to make sure it is feeding correctly. |
| Scanner Not Found | Using USB Port |
| | Unplug USB cable from the scanner and plug back in. Your computer will detect new hardware and ask for drivers to be installed. They are located on the top level of your Neuralog CD. |
| | Using Serial Port (COM) |
| | In the NeuraScanner software, 1) Click on <i>Edit -> Scanner Devices...</i> , 2) Click on <i>Auto Set</i> to detect available ports and sort them in the order Nscan will try. 3) <i>Below the list box you will see the Current Active Port Nscan is trying to connect to.</i> Select |

Index

Symbols

Colors 32

A

Activity Indicator 16

B

Basic Scan Operation 24

Basic Scanning **23**

Batch Files - Custom 25

Batch Scanning - Auto-
Numbering 31

BEGIN SCAN 24

C

CANCEL SCAN 24

Color Mode 32

Compression 32

Contact Image Sensor 17

D

Display Settings 22

Document Feed 23

E

Edit 30

Eject Paper 32

END 24

F

Fan 19

Features 11

File 29

File Naming 31

File Settings 32

File Setup 23

Fuse 13

Fuse Holder 18

G

Grounding 13

Group 4 32

H

Hardware Scan Controls 24

Hardware Setup 21

Help 31

I

Installation 22

Introduction 11

J

Jog Document Forward
24

Jog Forward 32

Jog Switch 16

L

LED Power 16

Length 32

LZW 32

M

Main Menu Items 29

Mode 23

N

NeuraView 26

O

On/Off Switch 18

Operation buttons 32

P

Paper Feed 23, 25, 26

Paper Guide 23

Paper Sensor 23

Paper Sensor Lever 17

PAUSE SCAN 24

Power Receptacle 18

Power Supply Cord 13

R

Removable Lid 16

Resolution 32

Restriction on Use 13

RESUME SCAN 24

S

Safety Information 13

Scan 32

Scan Control 32

Scan Controls 24

Scan from NeuraView 26

Scan rate 7, 11

Scan Settings 32

Scanning Software 22

Scanning Surface 17

Serial Port A 18

Serial Port B 18

Servicing 13

Set Up NeuraScanner 21

Setup 21

Sliding Paper Guid 17

Software CD 22

Software Installation 22

Software Reference 25, 29

Software Scan Controls 24

Start/Stop Button 16

STOP SCAN 32

System Requirements 33

T

Toolbar 30

Troubleshooting 35

U

UNIX 4

USB 21

USB Port 19

User Guide 15

V

View 30

W

Width 32

Windows 2000 21

Windows 95 21

Windows 98 21

Windows NT 33

Windows XP 21

Neuralog, Inc.

4800 Sugar Grove, Blvd.

Stafford, TX 77477

<http://www.neuralog.com>

Phone: 1-281-240-2525

Fax: 1-281-240-2526

Revised 09/15/03